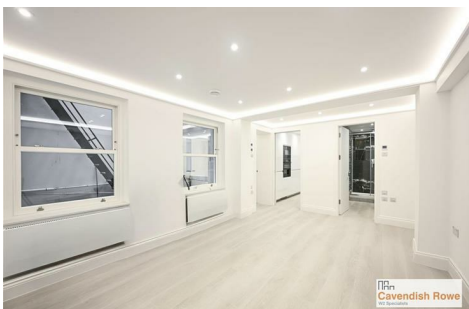


Westbourne Terrace, W2 3UW

£549,950



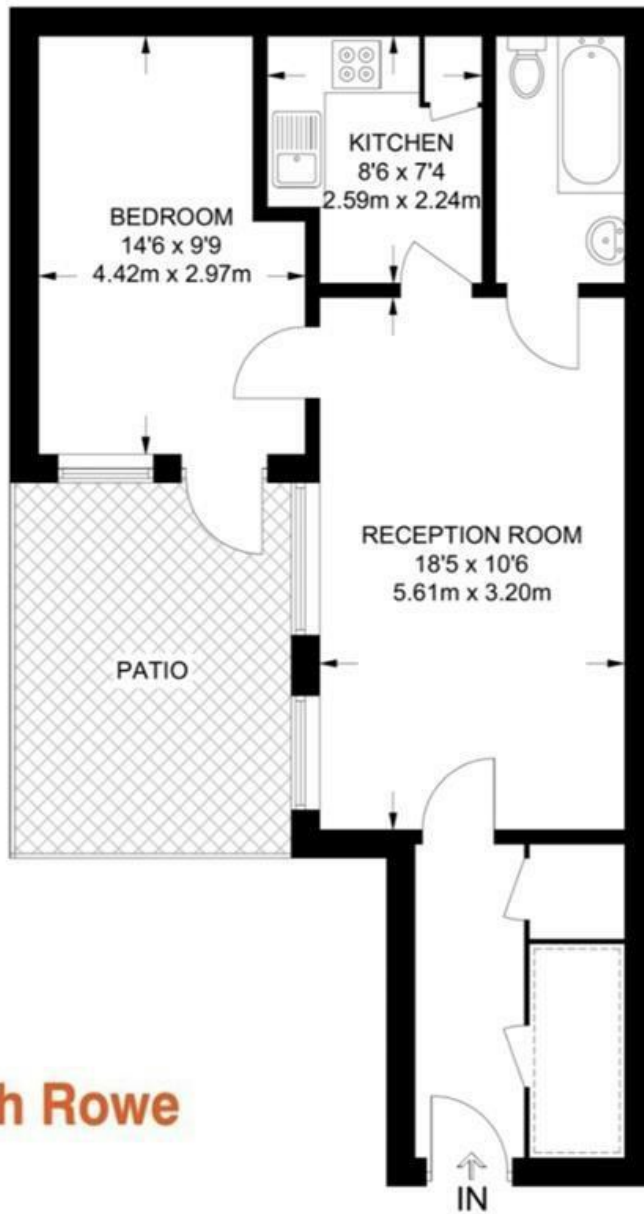
A fully refurbished one bedroom apartment situated on the lower ground floor of a Grade II Listed building a short walk to Paddington Station & Hyde Park.

The apartment was recently fully refurbished to a high specification and features a private patio flooding the place with natural light. The building's communal area is beautifully maintained with a lift leading down to the entrance of the apartment.

The property has 103 years remaining on the lease.

APPROXIMATE FLOOR AREA = 512 SQ FT / 47.6 SQ M
INCLUDING LIMITED USE AREA (24 SQ FT / 2.2 SQ M)

 = REDUCED HEAD HEIGHT BELOW 1.5M



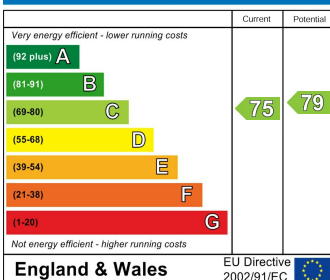

Cavendish Rowe
W2 Specialists

LOWER GROUND FLOOR

Surveyed and drawn in accordance with the International Property Measurement Standards (IPMS 2: Residential)



Energy Efficiency Rating



Environmental Impact (CO₂) Rating

